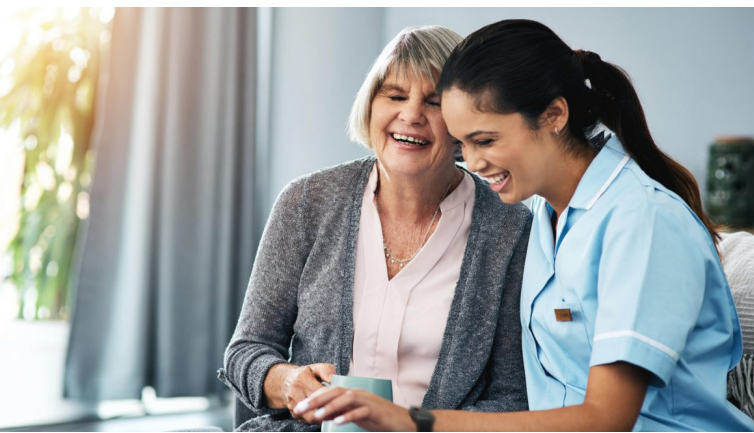


Your Questions, Our Answers

Choosing a home care provider can be overwhelming, but it doesn't have to be. Here are answers to common questions:

- 1. What makes Mercy Grace Home Care different?** We're your partner in care, offering personalized plans and compassionate caregivers who treat your loved one like family.
- 2. How quickly can services start?** Often within 24-48 hours after your free consultation. Your loved one's well-being can't wait.
- 3. Can I trust your caregivers?** Yes! Our caregivers are vetted, trained, and insured professionals who genuinely care.
- 4. What if my loved one's needs change?** We regularly reassess and adjust care plans to ensure the right level of support at all times.
- 5. How do you handle emergencies?** We're here 24/7. Whether it's a schedule change or urgent care need, we're just a phone call away.
- 6. What if I'm not happy with the caregiver?** Your satisfaction is our priority. We'll work with you to find a caregiver who's the perfect fit.

Still have questions? Let's talk. We're here to guide you every step of the way.



Why Choose Us

At Mercy Grace Home Care, we stand out as a trusted partner for Maryland families seeking compassionate and reliable home care services.

Here's why families choose us:

- Maryland Licensed and Insured
- Experienced, Trained, and Compassionate Caregivers
- Flexible, Customized Care Plans
- Commitment to Quality and Safety
- Local and Community-Oriented
- Affordable and Transparent Pricing

When you choose Mercy Grace Home Care, you're choosing a partner who truly cares about your loved one's well-being and your family's peace of mind.

Get In Touch

(301) 256 5508

care@mercygracehomecare.com
www.mercygracehomecare.com

841 - I Quince Orchard Blvd Gaithersburg
Maryland, 20878



Compassionate Care, Trusted Support



Experienced &
Professional Caregivers in
Maryland

(301) 256 5508

www.mercygracehomecare.com

About Us

At Mercy Grace Home Care, we are dedicated to providing exceptional in-home care services to Maryland families. As a licensed home care agency, we understand the importance of maintaining independence, dignity, and comfort for your loved ones.

Our mission is to deliver compassionate, personalized care that meets the unique needs of each individual and their family. Whether you need assistance with daily activities, respite care, or specialized care for a chronic condition, we are here to help.



Areas We Serve

We have a team of caregivers ready to serve you in the following counties:

- Montgomery
- Prince George's
- Baltimore
- Howard
- Anne Arundel
- Brookville
- Gaithersburg
- and surrounding counties!

OUR SERVICES

We offer a wide range of home care services designed to support individuals and their families:

Everyday Support & Personal Care

We help with the daily tasks that make life easier and more comfortable.

- Personal Care
- Meal Preparation
- Light Housekeeping
- Transportation

Companionship & Well-Being

Loneliness can take a toll on health and happiness. We provide meaningful connections

- Companionship
- Social Outings
- Hobby Support
- Respite Care

Skilled Nursing Care

For chronic conditions or specific health challenges, we provide tailored expert care.

- Memory Care
- Chronic Illness Care
- Post-Surgery/Recovery Care
- Hospice Support

Our trained caregivers are equipped to handle complex needs with expertise, patience, and compassion.

Who We Serve

Mercy Grace Home Care is here to support individuals and families across Maryland, including:

- **Seniors** who wish to age gracefully at home.
- **Individuals Recovering from Surgery or Illness** who need temporary assistance.
- **Adults with Disabilities** who require daily support.
- **Families** seeking respite care or additional help for their loved ones.

Regardless of the circumstances, we are committed to providing compassionate, tailored care to meet your needs.

How We Work

- **Free Consultation:** We start with a no-obligation assessment to understand your needs.
- **Customized Care Plan:** We create a personalized care plan tailored to your loved one's needs.
- **Caregiver Matching:** We match you with a trained, compassionate caregiver who fits your family's needs.
- **Ongoing Support:** We regularly check in to ensure the care plan is meeting your expectations.

Your loved one's well-being is our passion and priority.